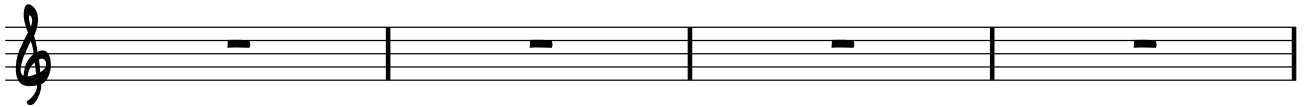
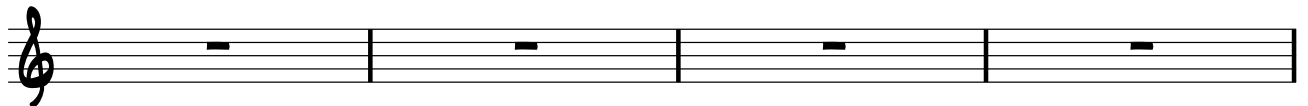


BLUES HARMONIC CONTINUUM

COLTRANE:	F Δ	A b7	D $^b\Delta$	E 7	A Δ	C 7	C-	F 7
"BIRD BLUES":	F Δ		E $^{\circ}$	A 7	D-	G 7	C-	F 7
W/ TRITONE SUBS:	F 7		B b7		F 7		F $\#-$	B 7
W/ TURNAROUNDS:	F 7		B b7		F 7		C-	F 7
BASIC JAZZ:	F 7		B b7		F 7		C-	F 7
BASIC "V-IV-I":	F 7							



COLTRANE:	B $^b\Delta$		B $^b-$	E b7	A-	D 7	A $^b-$	D b7
"BIRD BLUES":	B $^b\Delta$		B $^b-$	E b7	A-	D 7	A $^b-$	D b7
W/ TRITONE SUBS:	B b7		B $^b-$	E b7	A-	D 7	A $^b-$	D b7
W/ TURNAROUNDS:	B b7		B $^{\circ}7$		F 7		A-	D 7
BASIC JAZZ:	B b7				F 7		D 7	
BASIC "V-IV-I":	B b7				F 7			



COLTRANE:	G-	B b7	E $^b\Delta$	F $\#^7$	B Δ	D 7	G-	C 7
"BIRD BLUES":	G-		C 7		A-	D 7	G-	C 7
W/ TRITONE SUBS:	G-		C 7		F 7	D 7	G-	C 7
W/ TURNAROUNDS:	G-		C 7		F 7	D $^7_{ALT}$	G-	C 7
BASIC JAZZ:	G-		C 7		F 7		C 7	
BASIC "V-IV-I":	(C 7)		(B b7)		F 7			

